

TCL1A Antibody (Center)
Purified Rabbit Polyclonal Antibody (Pab)
Catalog # AP20567a**Specification**

TCL1A Antibody (Center) - Product Information

Application	FC, WB,E
Primary Accession	P56279
Reactivity	Human
Host	Rabbit
Clonality	Polyclonal
Isotype	Rabbit IgG
Calculated MW	13460

TCL1A Antibody (Center) - Additional Information**Gene ID** 8115**Other Names**

T-cell leukemia/lymphoma protein 1A, Oncogene TCL-1, Oncogene TCL1, Protein p14 TCL1, TCL1A, TCL1

Target/Specificity

This TCL1A antibody is generated from a rabbit immunized with a KLH conjugated synthetic peptide between 32-66 amino acids from the Central region of human TCL1A.

Dilution

FC~~1:25

WB~~1:1000

E~~Use at an assay dependent concentration.

Format

Purified polyclonal antibody supplied in PBS with 0.09% (W/V) sodium azide. This antibody is purified through a protein A column, followed by peptide affinity purification.

Storage

Maintain refrigerated at 2-8°C for up to 2 weeks. For long term storage store at -20°C in small aliquots to prevent freeze-thaw cycles.

Precautions

TCL1A Antibody (Center) is for research use only and not for use in diagnostic or therapeutic procedures.

TCL1A Antibody (Center) - Protein Information**Name** TCL1A**Synonyms** TCL1

Function Enhances the phosphorylation and activation of AKT1, AKT2 and AKT3. Promotes nuclear translocation of AKT1. Enhances cell proliferation, stabilizes mitochondrial membrane potential and promotes cell survival.

Cellular Location

Cytoplasm. Nucleus. Microsome. Endoplasmic reticulum. Note=Microsomal fraction

Tissue Location

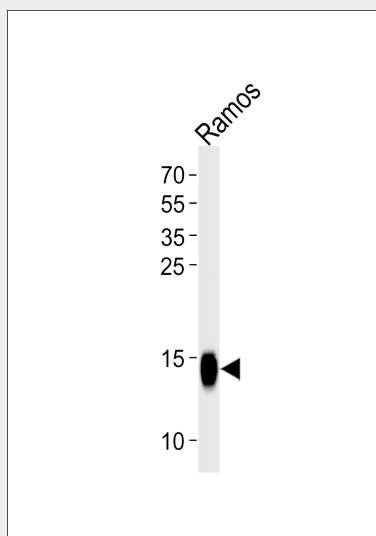
Restricted in the T-cell lineage to immature thymocytes and activated peripheral lymphocytes. Preferentially expressed early in T- and B-lymphocyte differentiation

TCL1A Antibody (Center) - Protocols

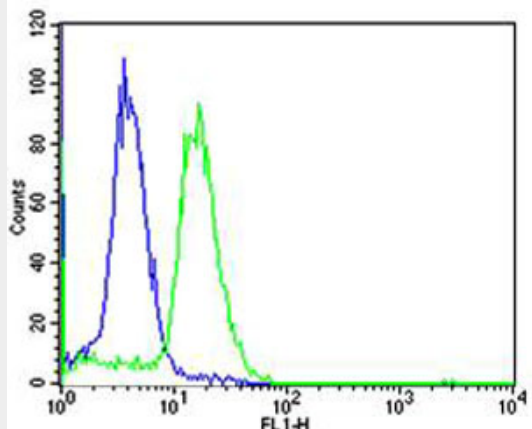
Provided below are standard protocols that you may find useful for product applications.

- [Western Blot](#)
- [Blocking Peptides](#)
- [Dot Blot](#)
- [Immunohistochemistry](#)
- [Immunofluorescence](#)
- [Immunoprecipitation](#)
- [Flow Cytometry](#)
- [Cell Culture](#)

TCL1A Antibody (Center) - Images



Western blot analysis of lysate from Ramos cell line, using TCL1A Antibody (Center)(Cat. #AP20567a). AP20567a was diluted at 1:1000. A goat anti-rabbit IgG H&L(HRP) at 1:5000 dilution was used as the secondary antibody. Lysate at 35ug.



Flow cytometric analysis of Ramos cells using TCL1A Antibody (Center)(green, Cat#AP20567a) compared to an isotype control of rabbit IgG(blue). AP20567a was diluted at 1:25 dilution. An Alexa Fluor® 488 goat anti-rabbit IgG at 1:400 dilution was used as the secondary antibody.

TCL1A Antibody (Center) - Background

Enhances the phosphorylation and activation of AKT1, AKT2 and AKT3. Promotes nuclear translocation of AKT1. Enhances cell proliferation, stabilizes mitochondrial membrane potential and promotes cell survival.

TCL1A Antibody (Center) - References

Virgilio L.,et al.Proc. Natl. Acad. Sci. U.S.A. 91:12530-12534(1994).
Ebert L.,et al.Submitted (JUN-2004) to the EMBL/GenBank/DDBJ databases.
Fu T.-B.,et al.Cancer Res. 54:6297-6301(1994).
Laine J.,et al.Mol. Cell 6:395-407(2000).
Pekarsky Y.,et al.Proc. Natl. Acad. Sci. U.S.A. 97:3028-3033(2000).